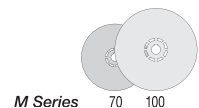




- Compact*
- Low inertia*
- Modular design*
- Interchangeable parts*
- Modules can be used with other discs*

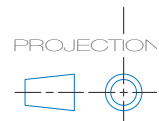
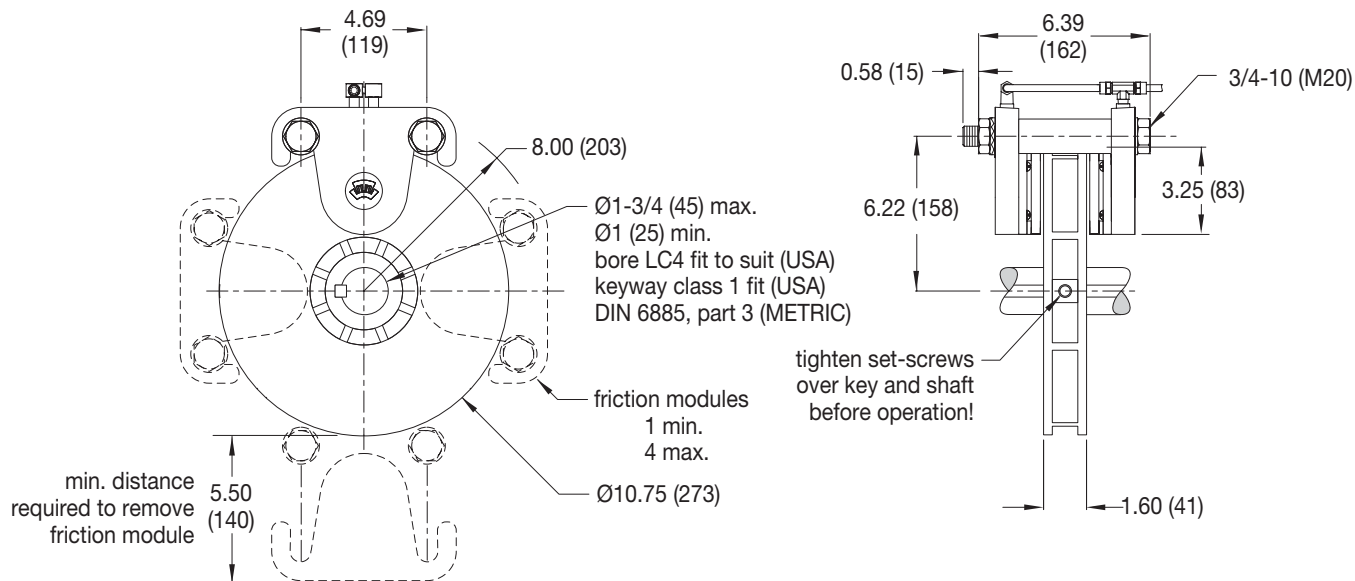


Montalvo Brakes

M-Caliper Series Brakes

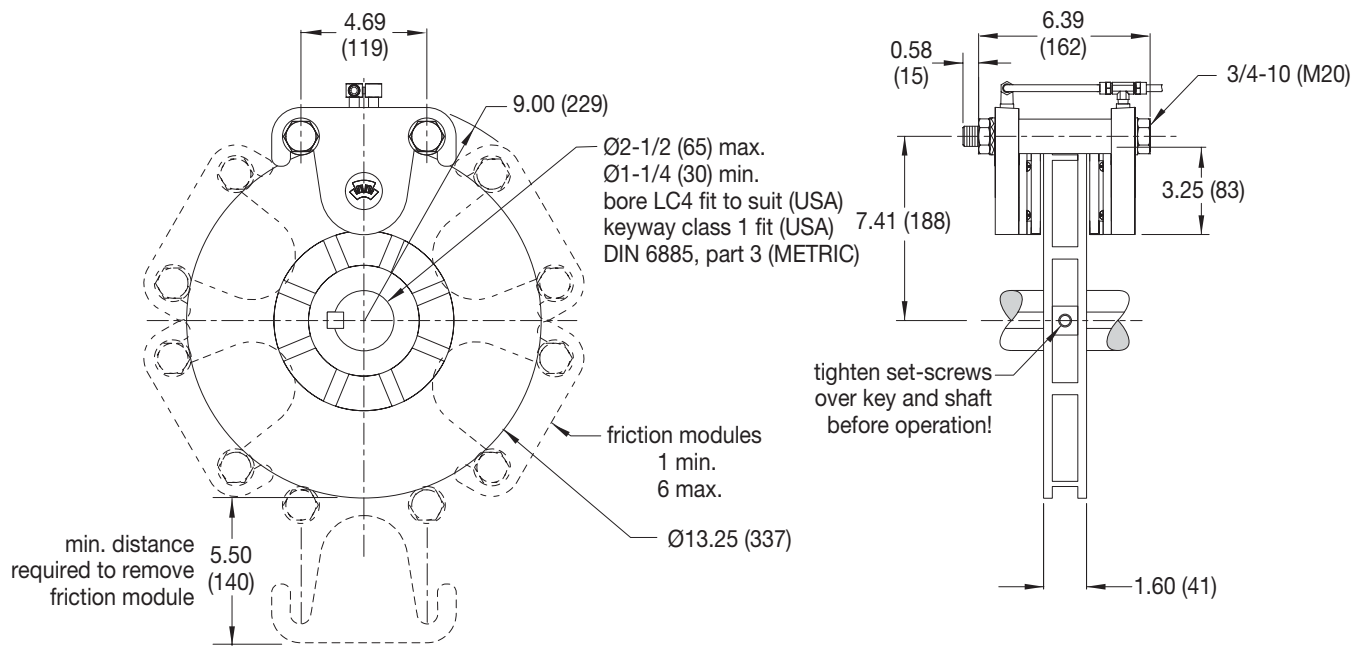
The M-Caliper Series was designed specifically for lighter duty applications where torque and sensitivity are important parameters but high thermal capacity is not. M-Caliper brakes offer an alternative to Montalvo's Standard, HP and HPS-Series brakes. M-Caliper brakes are available in two standard disc sizes, 70 and 100mm working diameters. The caliper units may, however, be applied to virtually any size of customer supplied friction disc. Since the wearable parts of the module are the same as the Standard Series, they provide interchangeability with other Montalvo Brakes. M-Calipers, available with or without the friction disc, may be used for various purposes including tension control, emergency stop, position control, and many other power transmission applications.

M 70

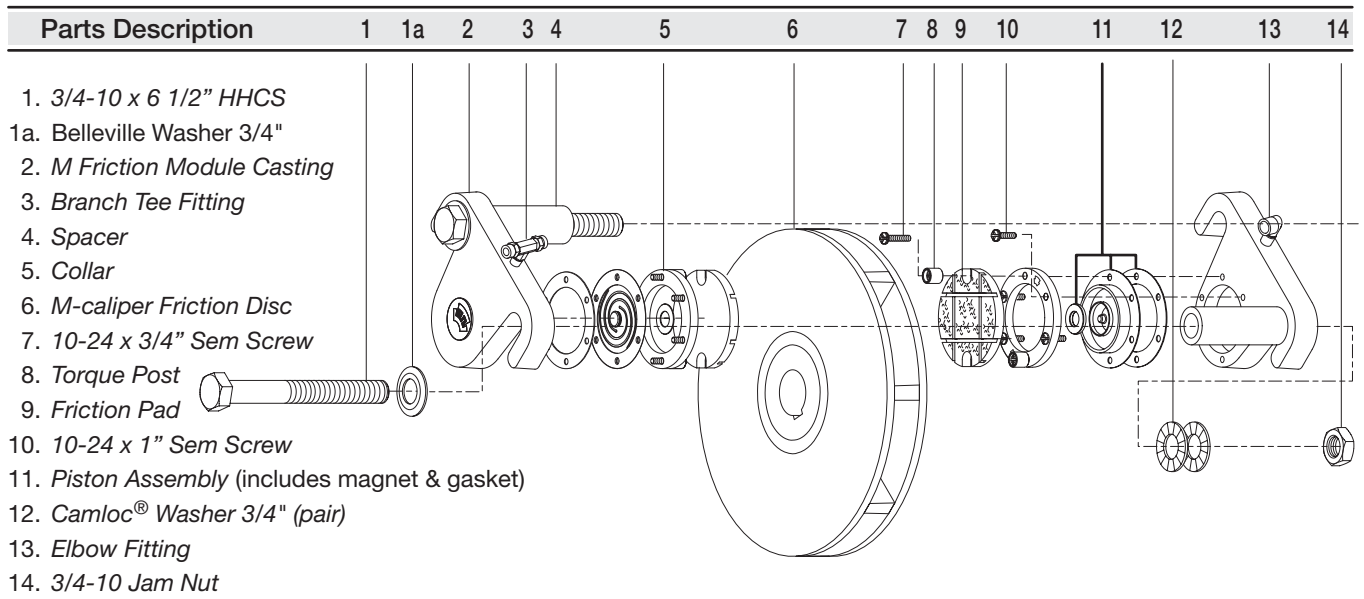


dimensions in inches (mm)

M 100



MC Friction Module

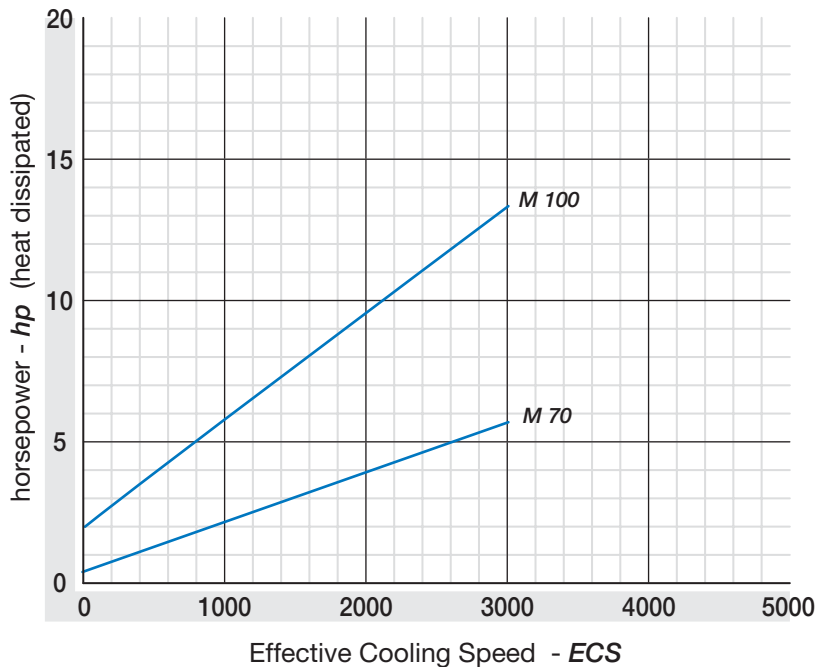


Torque

Size	Max. - Min. Torque†(in-lb) Max. @ 75 psi - Min. @ 1 psi					
	0.10		0.30		0.45	
	Fric. Coef.		Fric. Coef.		Fric. Coef.	
M 70						
M71	190	575	860			
M72	380	1150	1725	2.5	7.6	11.5
M73	575	1725	2585			
M74	765	2300	3450			
M 100						
M101	270	820	1230			
M102	545	1640	2460	3.6	10.9	16.4
M103	820	2460	3690			
M104	1090	3280	4920			
M105	1365	4100	6150			
M106	1640	4920	7380			

† Friction coefficients are nominal. Rated torque may vary depending on operating temperature.

Horsepower



Effective Cooling Speed

The speed at which a brake will dissipate a given heat horsepower.

$$ECS = \frac{2 (rpm \text{ min.}) + rpm \text{ max.}}{3}$$

Testing

The brakes were mounted as recommended in the Brakes Installation Instruction Manual. No guard or cover was used. Addition of machine guarding, fan or blower cooling, differences in ambient conditions, location, mounting method, etc. will affect heat (hp) dissipation capacity of any air cooled brake. Careful consideration should be given to all conditions surrounding installation. Please consult The Montalvo Corporation for help in application sizing.

Temperature

- Ambient 55 - 60°F (13 -16°C)
- Cast Iron Bulk 350°F (177°C)
- (humidity) 65 - 70 %

Note

Montalvo Brakes are called upon to operate within a wide speed range when used in converting applications They do not carry “nominal” ratings.

Size	Max. Speed* rpm	Inertia (Wr ²) (disc-hub) lb/ft ²	Weight (disc-hub) lb
M 70	3735	1.9	18
M 100	2920	3.75	27.4

* Do not use to calculate horsepower.

