

Montalvo

# MP-Series

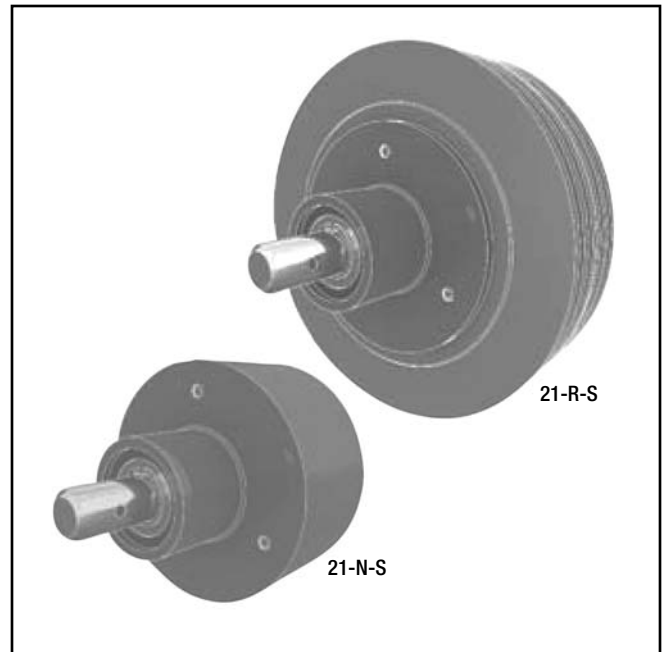
Magnetic Particle Brakes

Models:

MP-B-21-N-T / MP-B-21-R-T

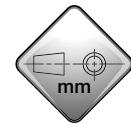
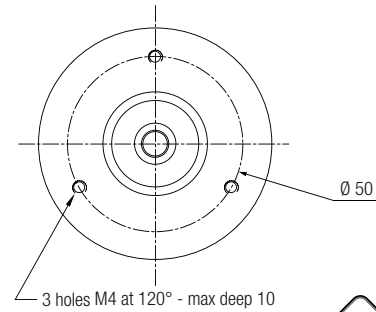
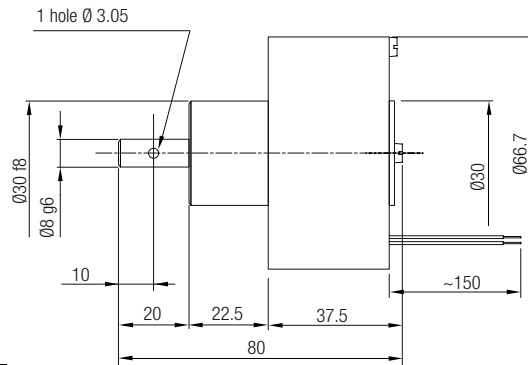
21

- Versatile Shafted design
- Torque range to **18 in-lb (2 Nm)**
- Radial cooling option
- Easily integrates into other systems
- Easy setup and operation

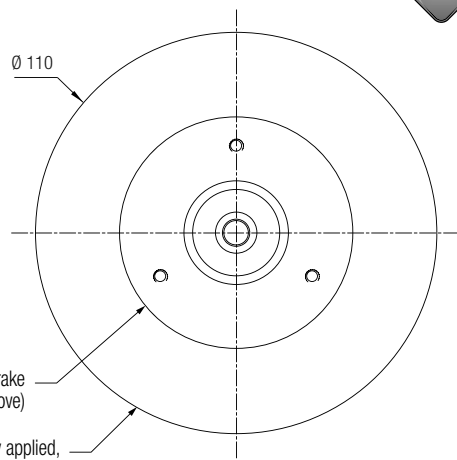
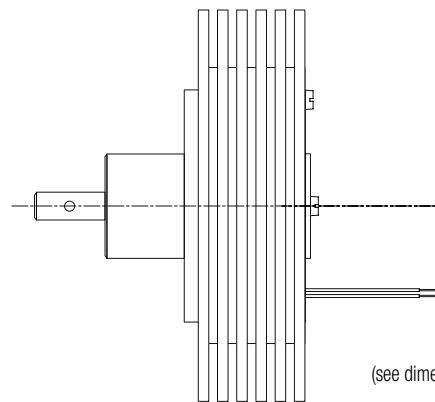


Ideal for clean room environments, Montalvo's MP-Series Brakes are a key component in high quality unwind applications. MP Brakes apply force (torque) to unwind webs in either closed or open-loop tension control systems. The **MP-B-21-N-S** features a compact size. The **MP-B-21-R-S** offers greater heat dissipation through passive radial cooling. MP-Series Brakes utilize the **VC2 Voltage Converter**, a micro-controller regulated current power supply.

### MP-B-21-N-S



### MP-B-21-R-S



BETTER WEBSITE DATA

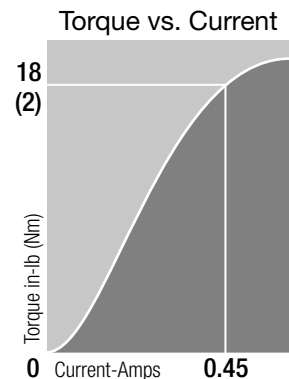
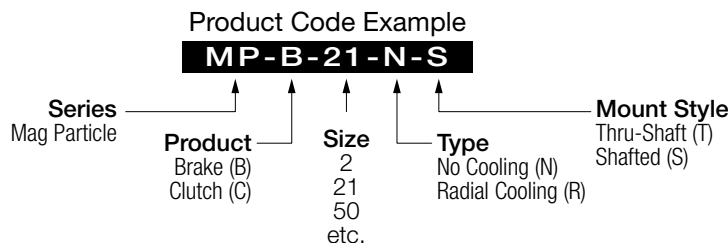
Specifications		MP-B-21-N-S	MP-B-21-R-S
Torque - Max.	in-lb (Nm)	18 (2)	
Torque - Min.	in-lb (Nm)	0.4 (0.04)	
Current - Rated	A	0.45	
Coil Resistance <sup>(1)</sup>	Ω	31	
Rotor Inertia	in-lb <sup>2</sup> (kg/m <sup>2</sup> )	0.1196 (35x10 <sup>-6</sup> )	
Rotation Speed - Min. <sup>(2)</sup>	rpm (mn <sup>-1</sup> )	40	
Rotation Speed - Max. <sup>(2)</sup>	rpm (mn <sup>-1</sup> )	3000	
Temperature (housing) - Rated <sup>(3)</sup>	°F (°C)	212 (100)	
Temperature (housing) - Max. <sup>(3)</sup>	°F (°C)	248 (120)	
Heat Dissipation	HP (watts)	0.05 (35)	0.08 (60)
Weight	lb (kg)	2.0 (0.91)	2.75 (1.25)

(1) At 20°C (varies with the coil temperature).

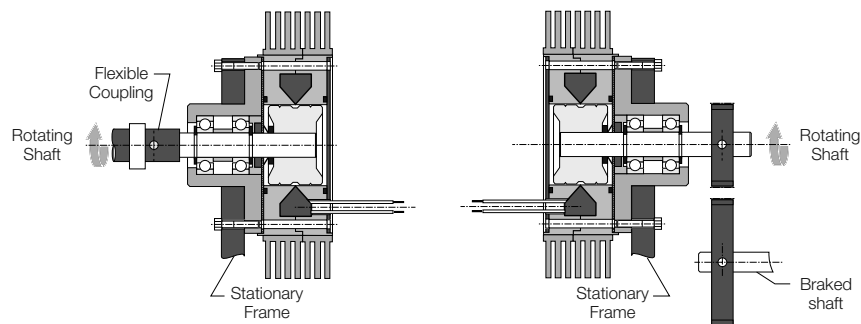
(2) Except RR versions. Any further request, consult Montalvo.

(3) Max. for rated life.

(4) Remnant motor version.



## Recommended Mounting



## Installation Hotlines

	207-856-2501 / 800-226-8710
	+86-21-52188010
	+45 75 57 27 11
	+49 (0)511 760 691 41

