

Montalvo

MP-Series

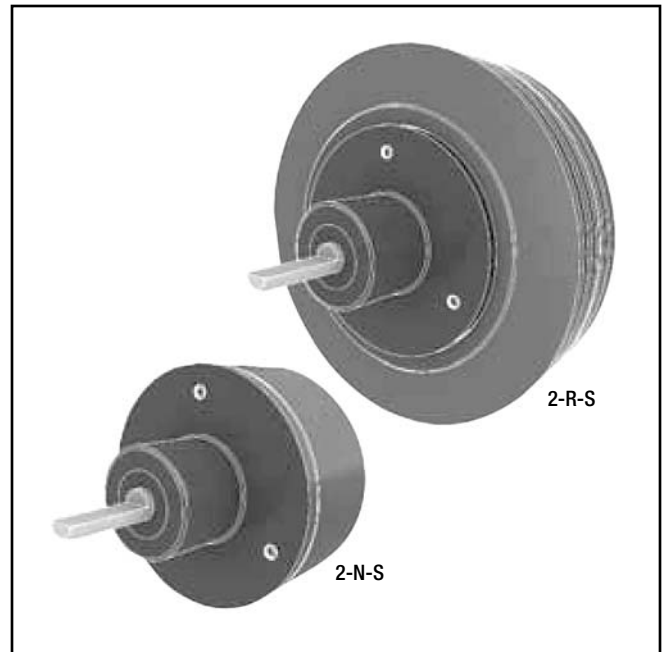
Magnetic Particle Brakes

Models:

MP-B-2-N-S / MP-B-2-R-S

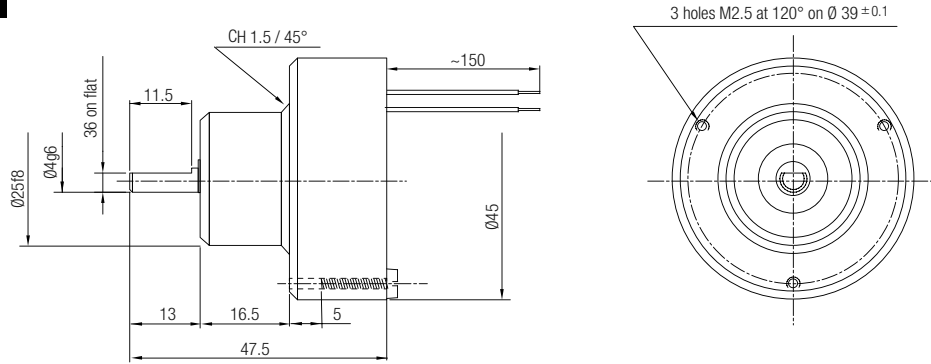
2

- Versatile Shafted design
- Torque range to **1.8 in-lb (0.20 Nm)**
- Radial cooling option
- Easily integrates into other systems
- Easy setup and operation

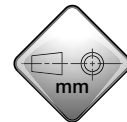
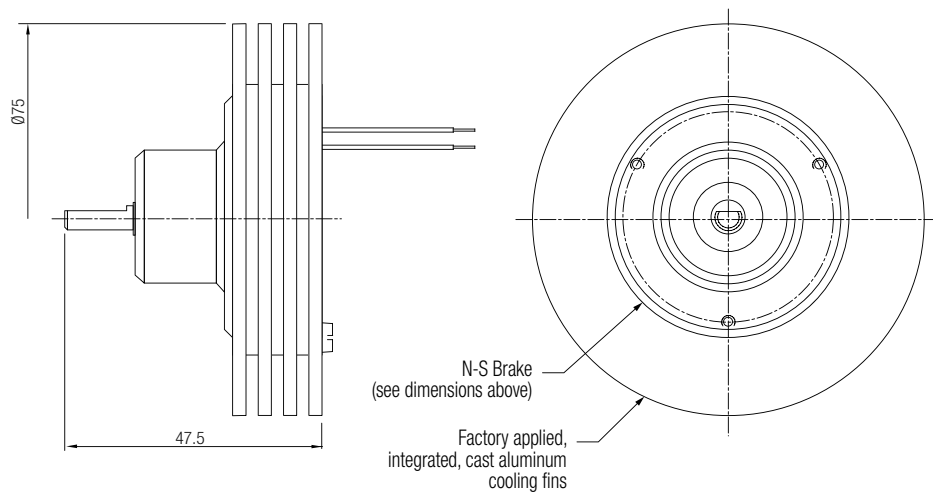


Ideal for clean room environments, Montalvo's MP-Series Brakes are a key component in high quality unwind applications. MP Brakes apply force (torque) to unwind webs in either closed or open-loop tension control systems. The **MP-B-2-N-S** features a compact size. The **MP-B-2-R-S** offers greater heat dissipation through passive radial cooling. MP-Series Brakes utilize the **VC2 Voltage Converter**, a micro-controller regulated current power supply.

MP-B-2-N-S



MP-B-2-R-S



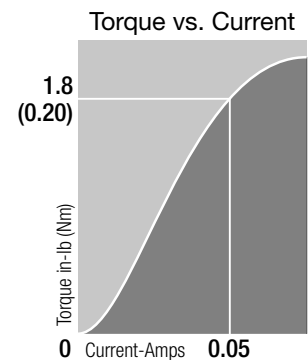
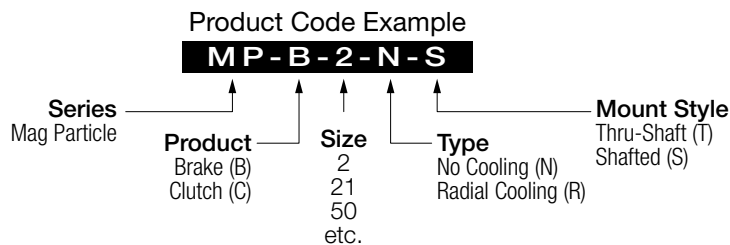
BETTER
WEB
CONTROL
ASSURANCE

Specifications		MP-B-2-N-S	MP-B-2-R-S
Torque - Max.	in-lb (Nm)	1.8 (0.20)	
Torque - Min.	in-lb (Nm)	0.07 (0.007)	
Current - Rated	A	0.05	
Coil Resistance ⁽¹⁾	Ω	195	
Rotor Inertia	in-lb ² (kg/m ²)	0.0027 (0.8x10 ⁻⁶)	
Rotation Speed - Min. ⁽²⁾	rpm (mn ⁻¹)	40	
Rotation Speed - Max. ⁽²⁾	rpm (mn ⁻¹)	3000	
Temperature (housing) - Rated ⁽³⁾	°F (°C)	212 (100)	
Temperature (housing) - Max. ⁽³⁾	°F (°C)	248 (120)	
Heat Dissipation	HP (watts)	0.02 (15)	0.03 (25)
Weight	lb (kg)	0.48 (0.22)	0.73 (0.33)

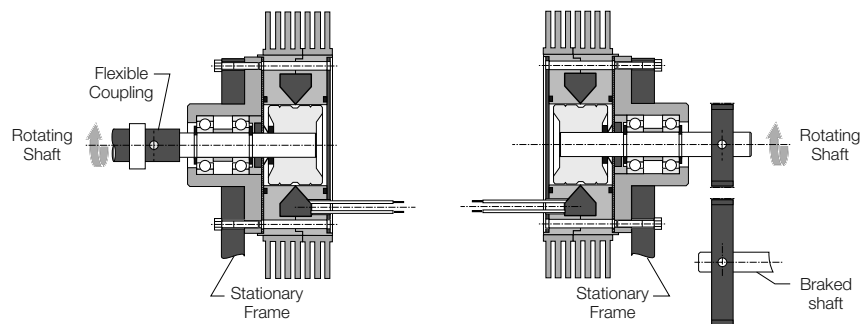
(1) At 20°C (varies with the coil temperature).

(2) Except RR versions. Any further request, consult Montalvo.

(3) Max. for rated life.



Recommended Mounting



Installation Hotlines

	207-856-2501 / 800-226-8710
	+86-21-52188010
	+45 75 57 27 11
	+49 (0)511 760 691 41

