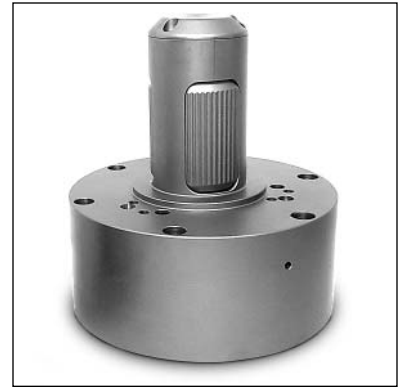


Defender Series Core Chucks

Model PA (Pneumatically Activated)



Introduction

This manual is included with Montalvo's model PA Pneumatically Activated mechanical core chucks as part of the documentation. Product characteristics, correct usage, normal maintenance and assembly/disassembly are covered. Please retain this document for the life of the product.

Technical Characteristics

Pneumatically Activated mechanical core chucks are expanding type. Carbon steel construction ensures a durable product with a long life. Lugs are heat treated, allowing them to safely handle significant weight and torque.

Dimensions are reduced to a minimum to maintain maximum distances between the arms of machines to accommodate a wide range of material widths. The efficient design is composed of minimal parts that require little maintenance.

Features

- Adaptable to different core IDs using a wide a wide range of aluminum adapters
- Jaws with a vulcanized rubber surface are available for an optimal grip on PVC cores
- Two versions available - Positive or Negative spring release
- Durable construction for the heaviest loads and longest duty cycles
- Custom specifications possible

Usage

Pneumatically Activated mechanical core chucks are designed and built to be used in many industries such as paper, cardboard, plastic films, converting, coating, laminating and printing on machines like:

- Roll Stands
- Unwinders
- Rewinders

Jaw expansion is designed to activate when pneumatic pressure is applied before winding.

Defender PA core chucks are designed to be mounted on machines mentioned above using hexagon socket head screws. Customer specified flange dimensions ensure a fast installation with little or no machine alterations. Any other explicit customization requested has to be approved by the customer, and Montalvo is responsible only in case of a production failure and/or error according to customer's design.

Heat treated components reduce mechanical wear and extend product life. The nickel plating enhances resistance to wear and corrosion.


Montalvo is not responsible for any customization done by the customer.

Defender Series Core Chucks

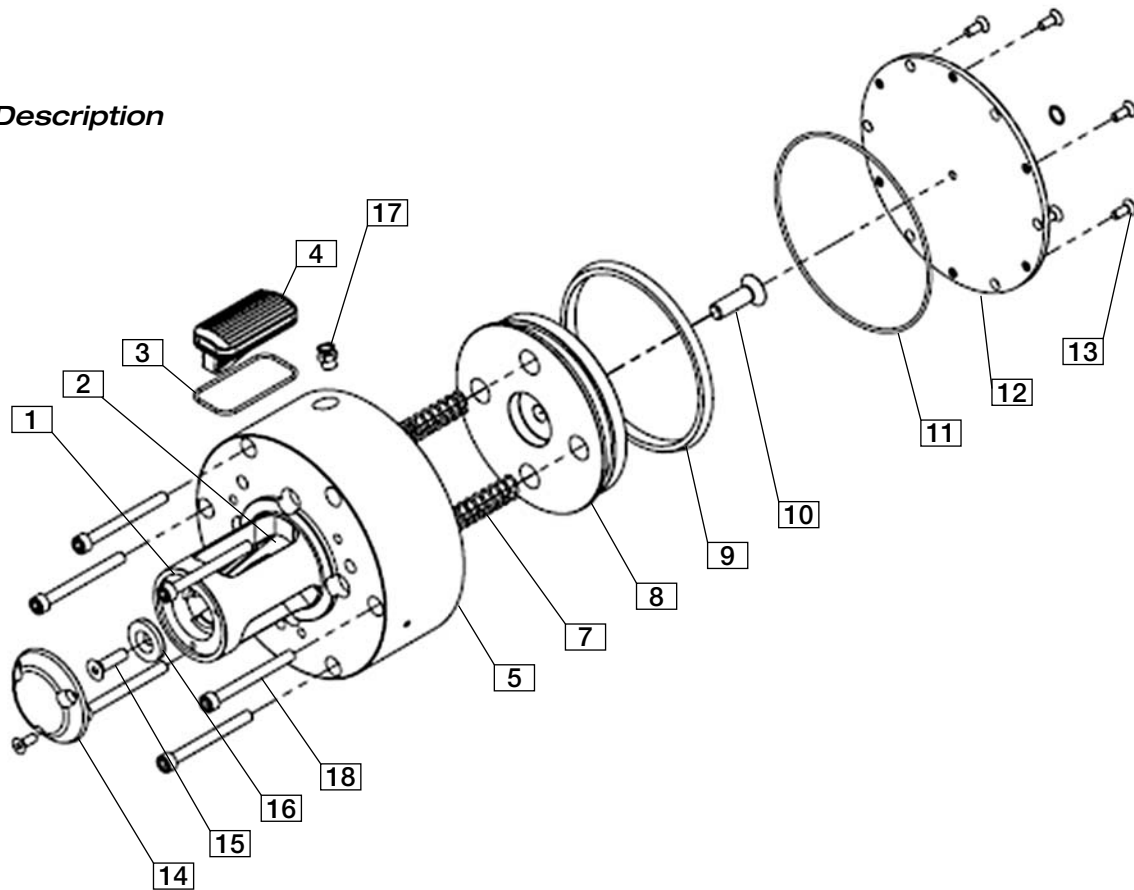
Model PA (Pneumatically Activated)

Maintenance

Montalvo recommends inspecting and a general cleaning of the chucks every month. In particular, it is recommended to clean the chucks of any dust, fibers or dirt with compressed air to ensure optimal functioning. It's a good practice to perform more detailed cleaning of the chucks at regular intervals.

 *If the expanding elements become worn, and unable to form and maintain optimal grip, they must be replaced.*

Parts Description



1	PIN	11	O-RING
2	O-RING	12	FLANGE
3	O-RING	13	SCREW
4	JAW	14	COVER
5	CAGE	15	SCREW
6	CYLINDRICAL PIN	16	WASHER
7	SPRING	17	AIR VALVE
8	PISTON	18	SCREW
9	DEM 150-135	19	O-RING (only for axial inflating)
10	SCREW	20	CUSTOM FLANGE

EST. 1947

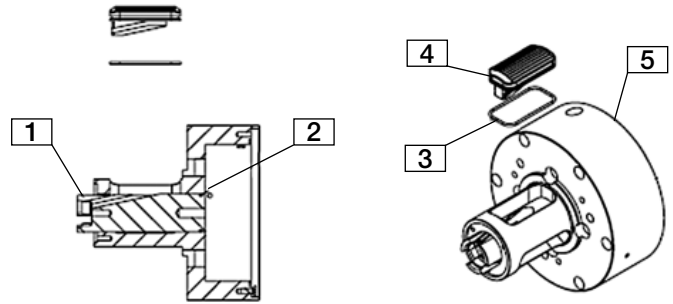
montalvo
Better Web Control®

Defender Series Core Chucks

Model PA (Pneumatically Activated)

Step 1

- Attach O-ring (3) on all jaws (4) if required
- Attach O-ring to pin (1)
- Locate all jaws temporarily
- Retract pin (1)



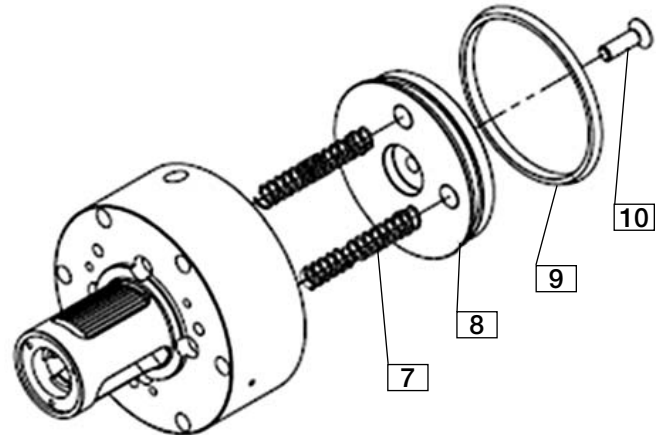
Step 2

- Install O-ring (9) on piston
- Locate pin (6) on piston



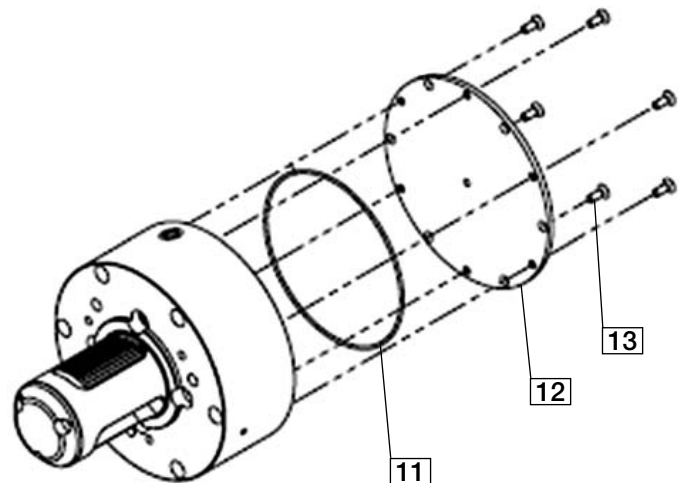
Step 3

- Set springs (7) inside chuck
- Secure piston, springs and pin with screw (10)



Step 4

- Set O-ring (11) into place on chuck
- Attach flange (12) with screws (13)

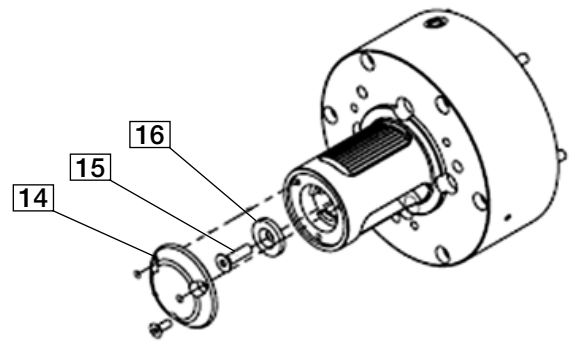


EST. 1947

montalvo
Better Web Control®

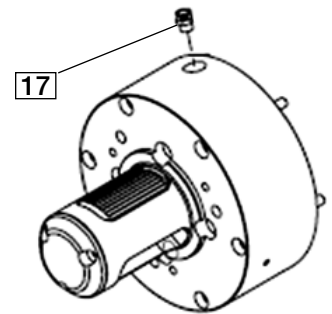
Step 5

- Attach washer (16) with screw (15) to pin (1)
- Attach cover (14) with screws



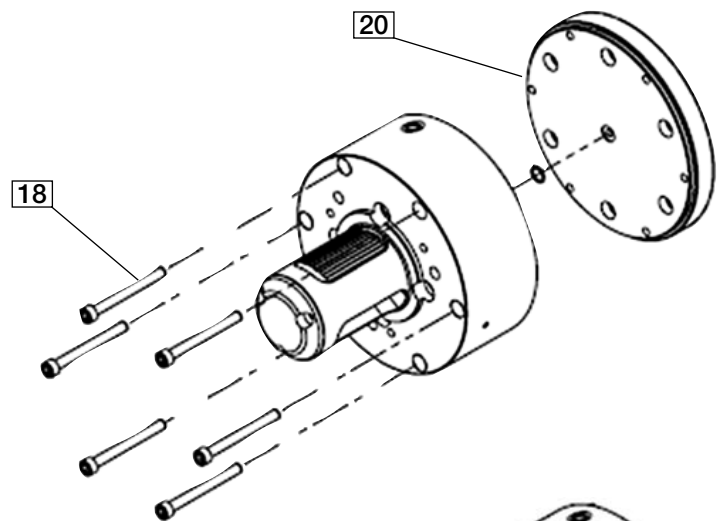
Step 6

- Attach air-valve (17)



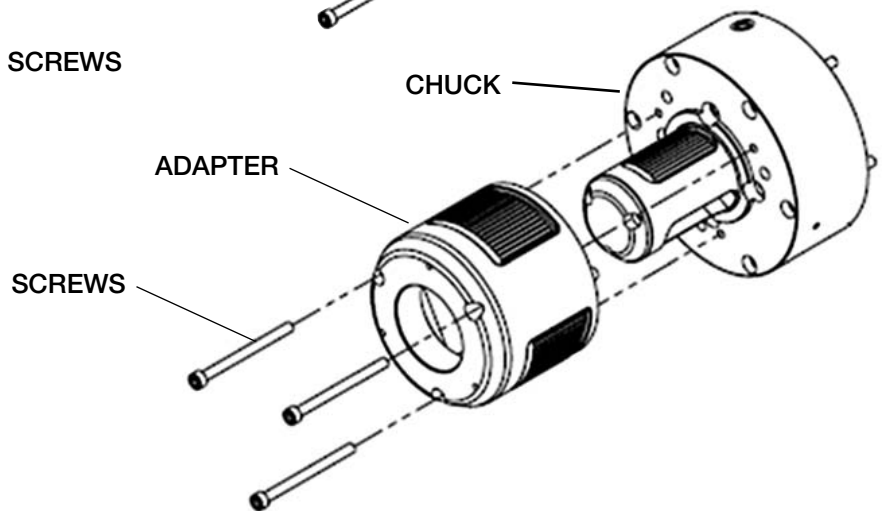
Attach to Machine

- Attach flange (20) to machine frame
- Attach chuck to flange (20) with screws (18)



Attach Adapter (if using)

- Attach ADAPTER to CHUCK with SCREWS



EST. 1947

montalvo

Better Web Control®