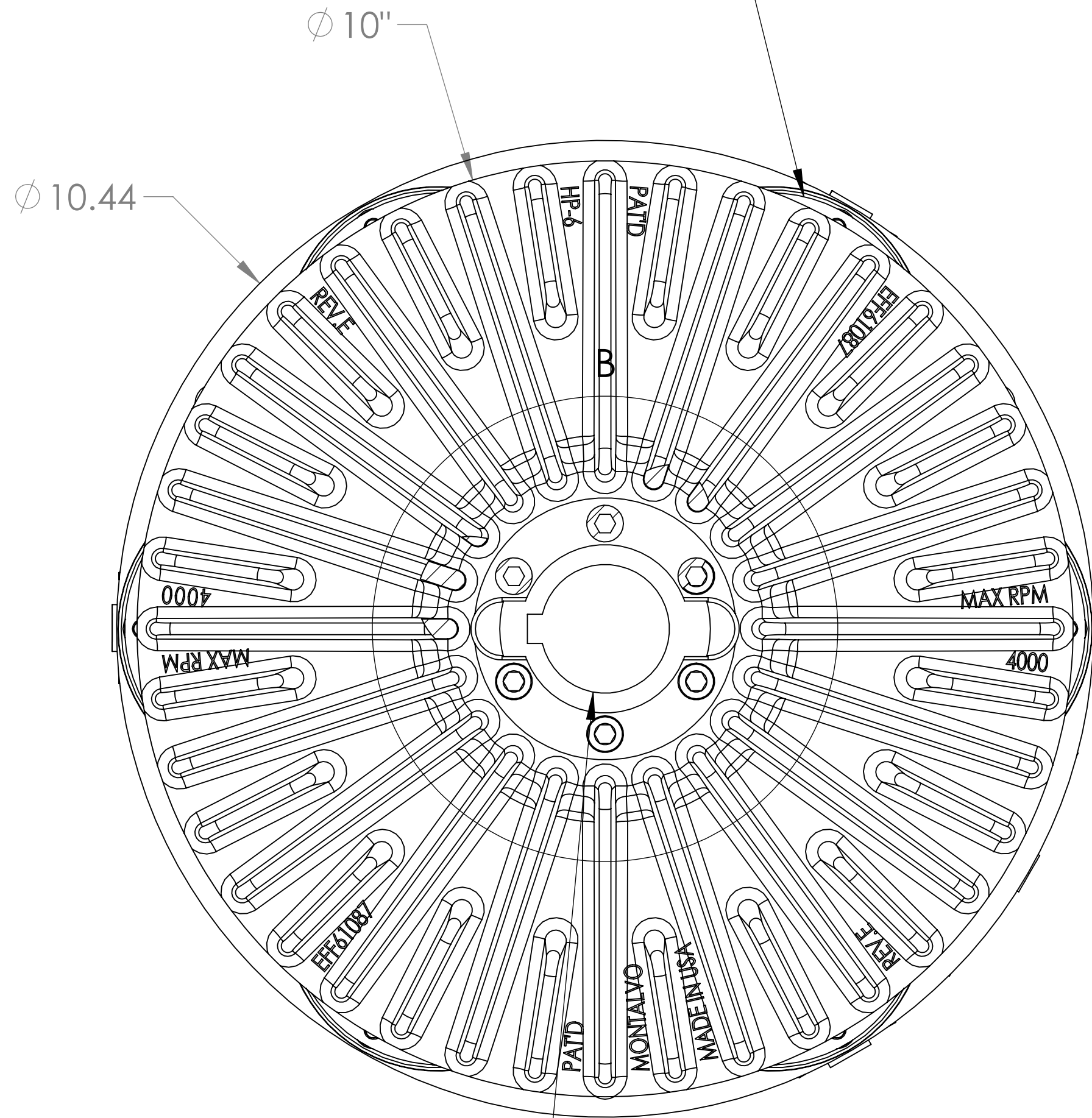
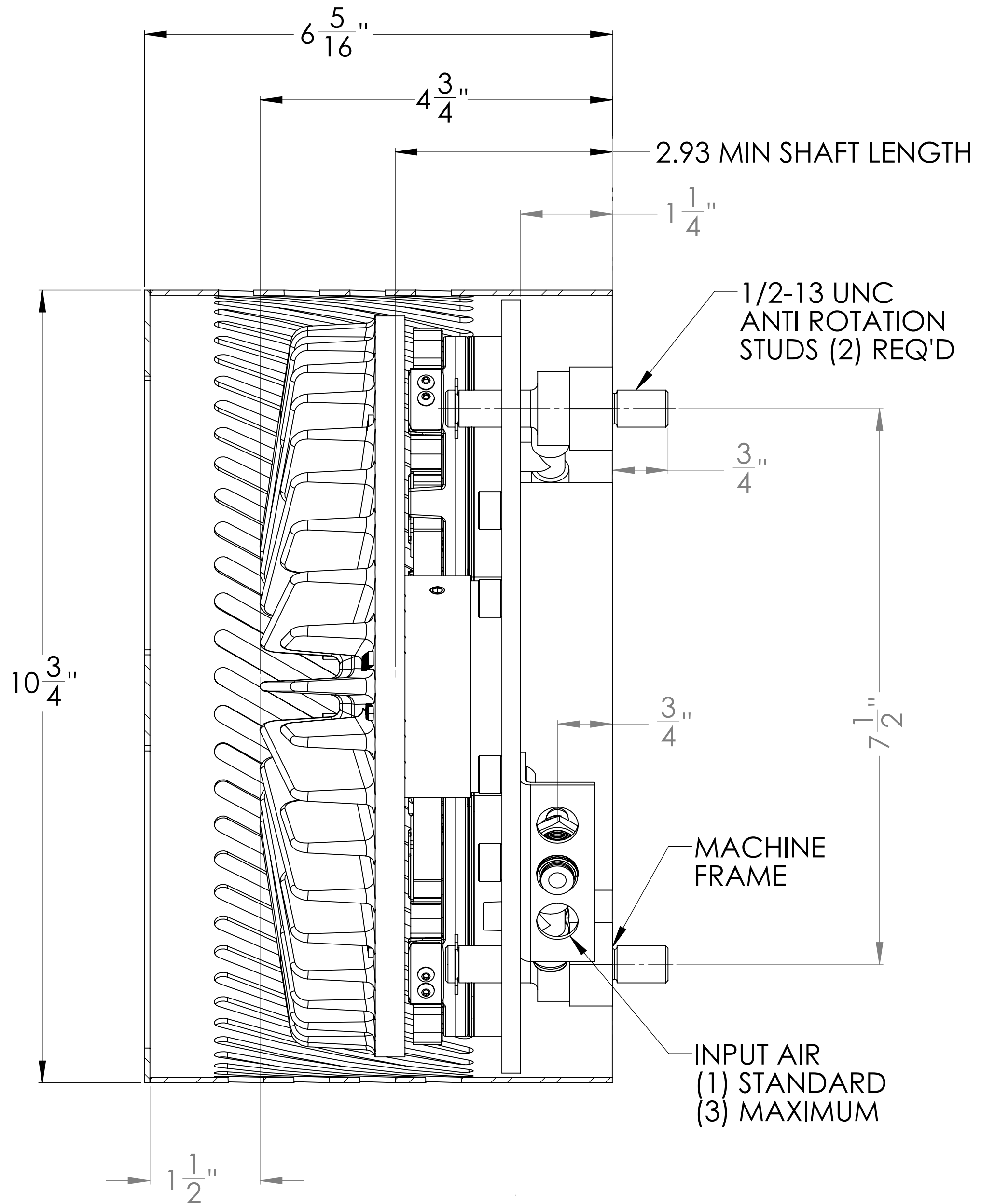


PATENTED FRICTION MODULE DESIGN
 ALLOWS FRICTION PAD CHANGES
 WITHOUT TOOLS



MIN BORE DIA: 7/8" (22MM)
 MAX BORE DIA: 1.5" (40MM)
 BORE LC4 FIT TO SUIT (USA)
 BORE H7 FIT TO SUIT (METRIC)
 KEYWAY CLASS 1 FIT (USA)
 DIN 6885 PART 1 (METRIC)



PROPRIETARY AND CONFIDENTIAL
 © THE MONTALVO CORPORATION 2009
 ALL RIGHTS RESERVED. ANY USE OF THIS DRAWING
 OR THE INFORMATION CONTAINED HEREIN, FOR A
 PURPOSE OTHER THAN AS EXPRESSLY AUTHORIZED
 BY THE MONTALVO CORPORATION OR ITS SUBSIDIARY,
 DAKAROTA TECHNICAL ASSOCIATES IS EXPRESSLY PROHIBITED.

UOS: .00 = ± .01
 UOS: .000 = ± .005
 UOS: .0000 = ± .0005
 UOS: DRAFT ANGLE = 3°
 UOS: ANGULAR: = ± 1/2°
 UOS: FRACTIONAL: = ± 1/64
 UOS: FINISH = AS SHOWN

© 2009 **montalvo**
 Better Web Control®
 The Montalvo Corp, 50 Hutcherson Drive Gorham, ME 04038
 info@montalvo.com 1-800-266-8710

TITLE: BR ASSY V250 BRNG
 DRAWN BY: GEL
 CHK BY: -
 DATE: 8/17/09
 SIZE: C
 Prt No. 99002706
 Dwg No. 99002706
 SCALE: NONE
 SHEET 2 OF 7